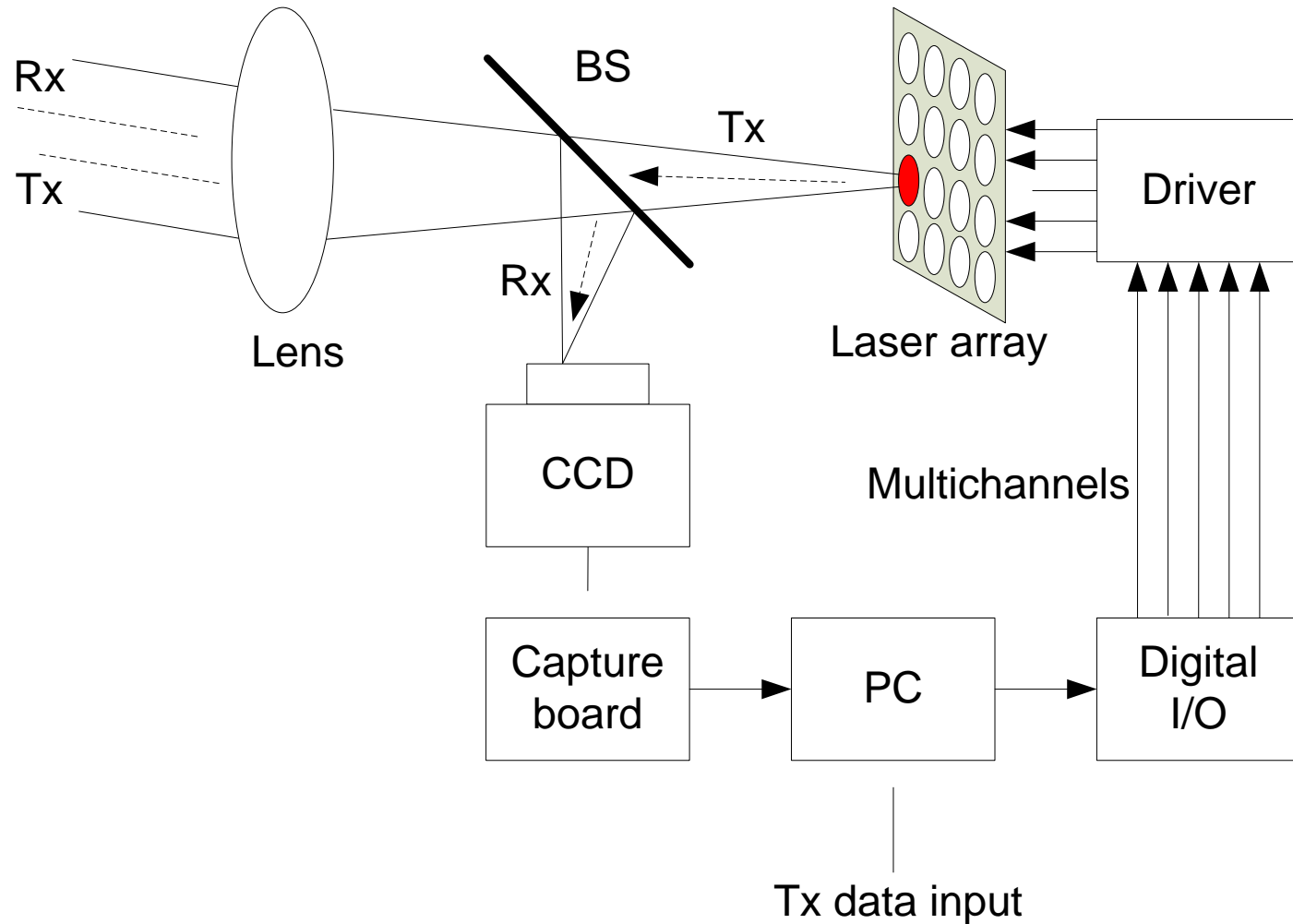
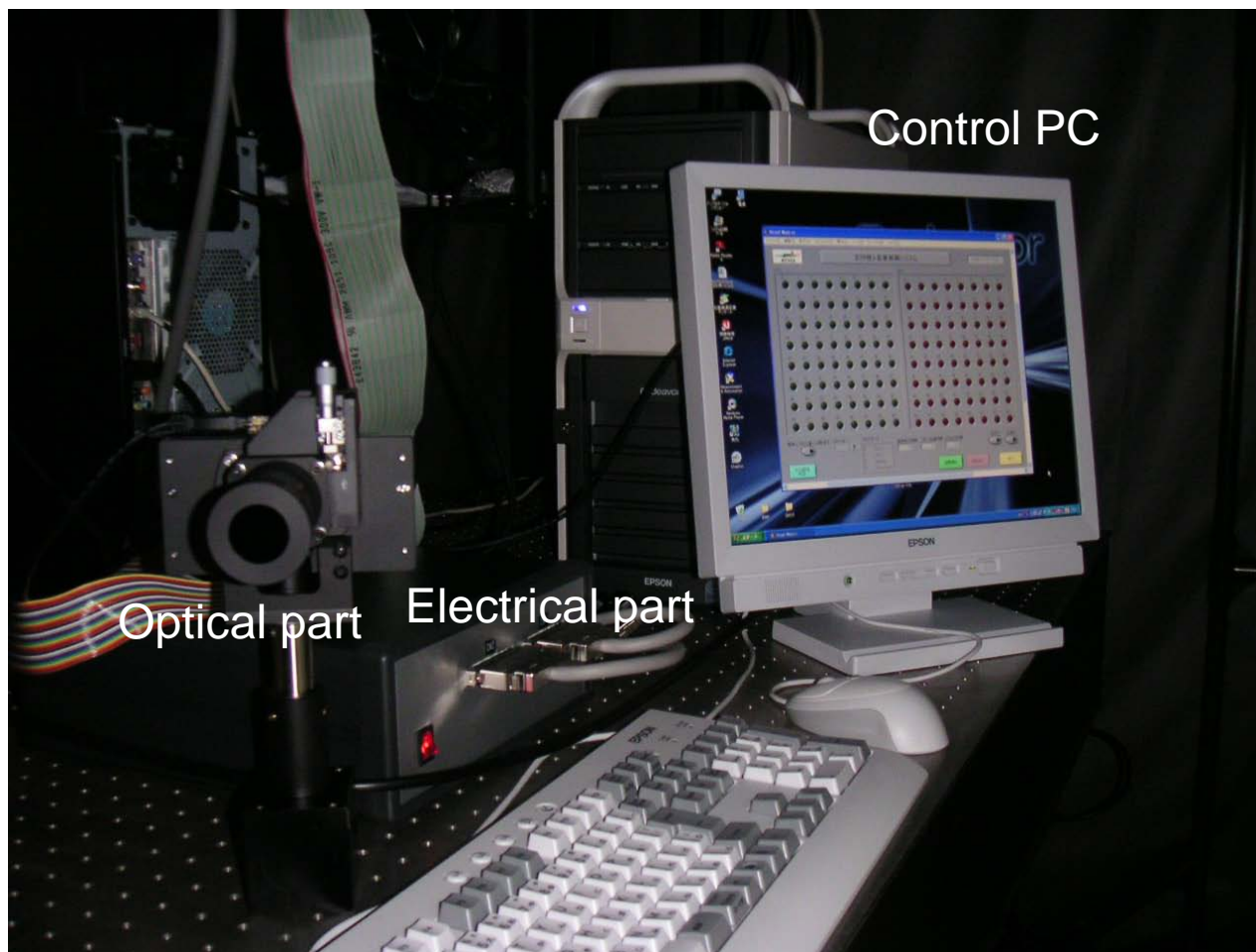


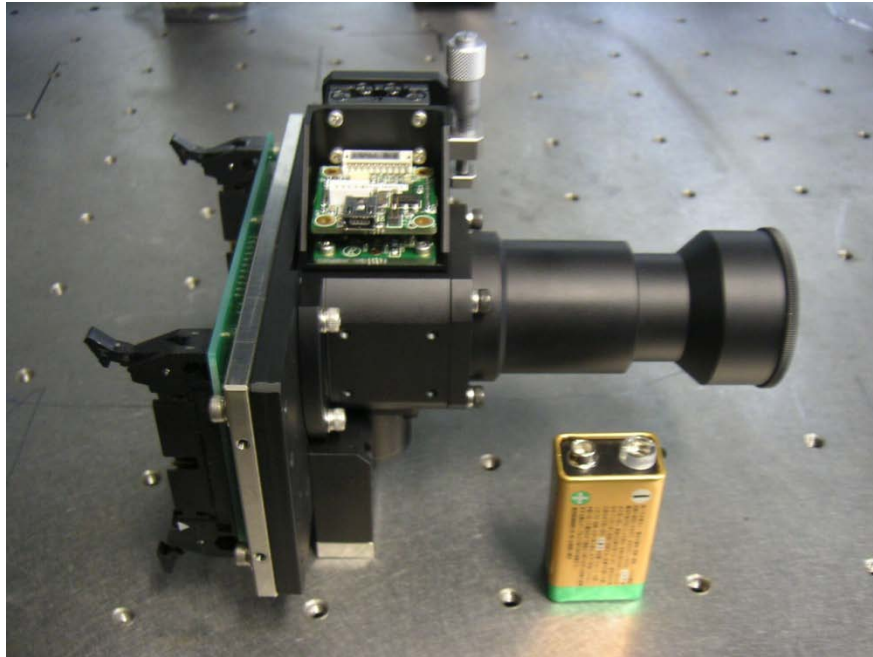
Configuration



Experimental setup



Optical and electrical parts



Optical part

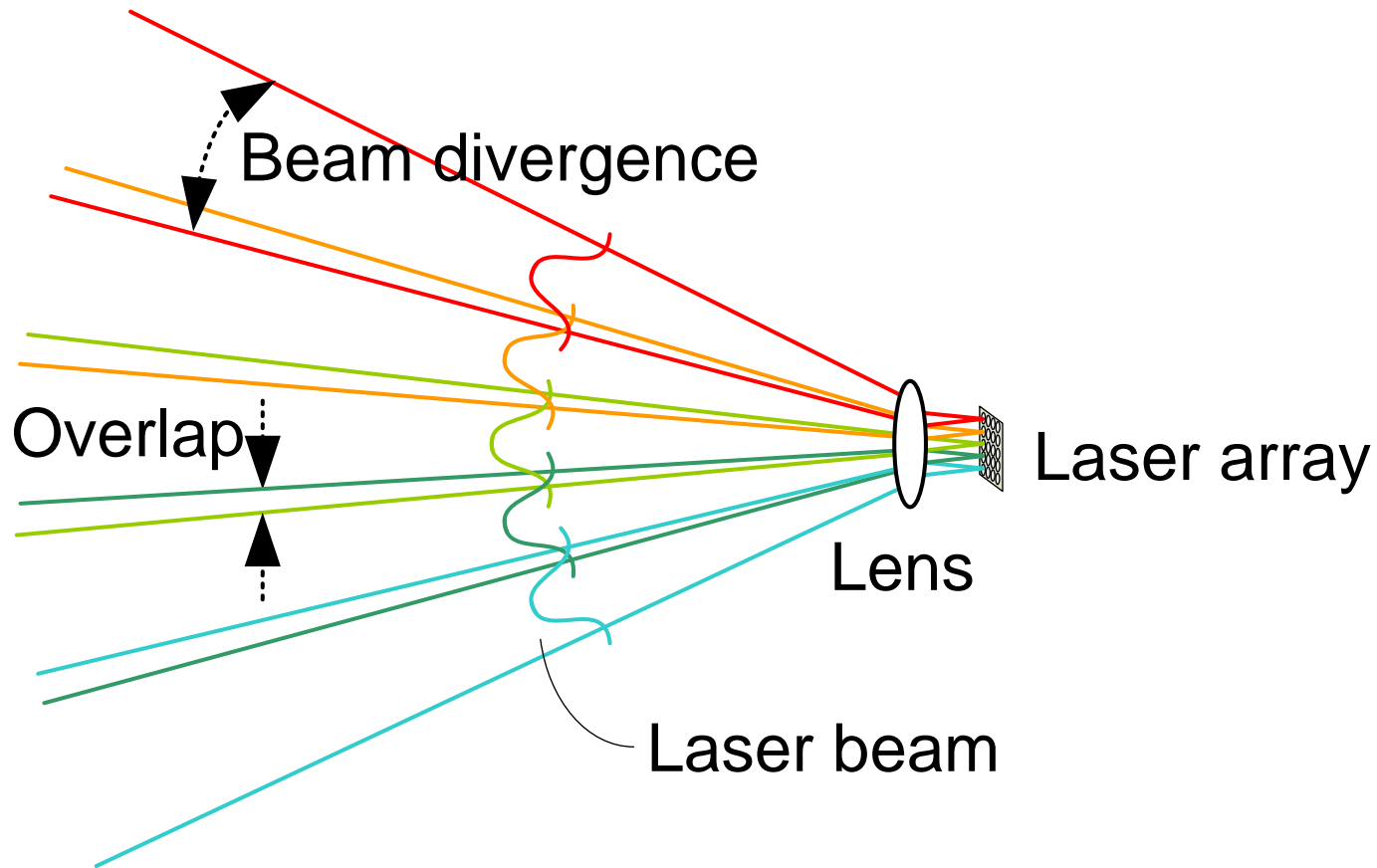
Resource	Value
Mass	1 kg
Size (lens mount)	15 x 12 x 12 cm (13.5 x 6 x 11 cm)



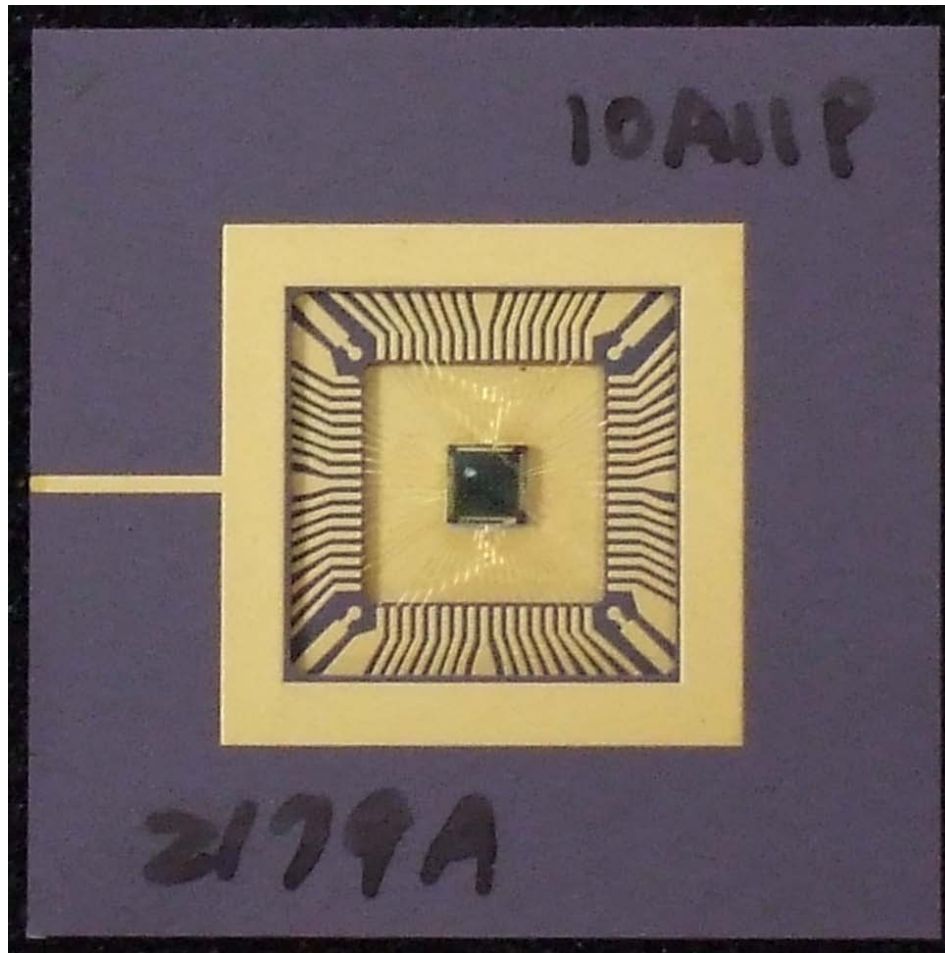
Electrical part (laser driver)

Resource	Value
Mass	3.1 kg
Size	27 x 26 x 10 cm
Power	10 W

Beam transmission method



8x8 VCSEL used in this model



VCSEL output examples

